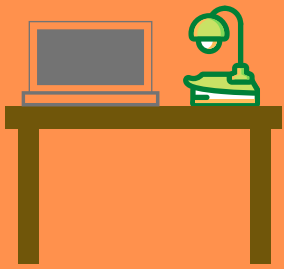


# KEEPING THE LEARNING GOING AT HOME

## Quick Guide to Bridge Academy Expectations



### SET THE RIGHT ATMOSPHERE

Create a personal workspace.  
Keep distractions off and away during schoolwork time.  
Come dressed for school and ready to be seen.  
In live interactions, sit so there is no bright light source behind you.



### BE RESPECTFUL

Follow directions the first time they are given.  
Use positive and school-appropriate language and tone.  
Be patient, considerate, and cooperative.  
Wear headphones.  
In live interactions, be on mute when others are speaking.



### BE RESPONSIBLE

Keep your device charged.  
Log in before class starts.  
Be prepared with materials and work.  
Participate and stay on task.  
Use emails, chats, and discussion boards for academic conversations only.



### BE SAFE

Keep logins and other identifying information to yourself.  
Stay only on school-approved websites and apps.

## CHECK THESE WEBSITES REGULARLY



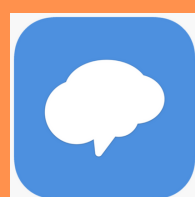
CLASSROOM



EMAIL



STUDENTVUE



REMIND



RMS HOME PAGE